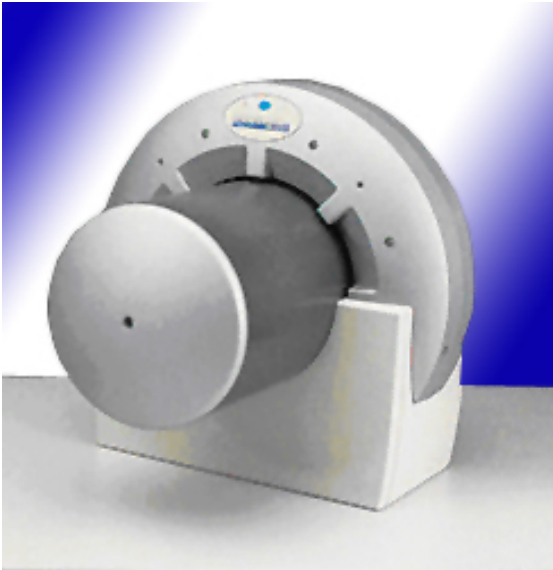




The Processor People

PROSCAN

CR -SYSTEM



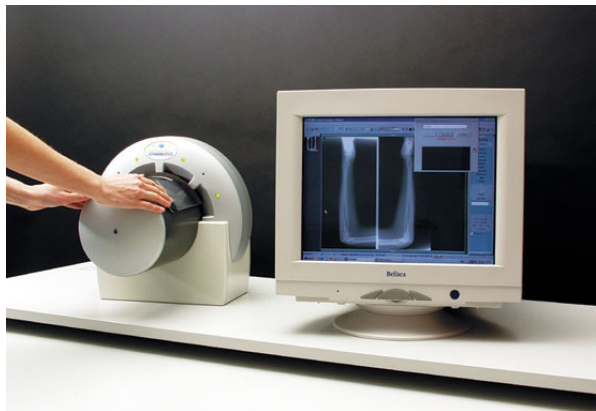
VISTASCAN is a modern, high resolution scanner for imaging plates. It transfers X-ray information saved on the imaging plate into a digital signal. With our PROMIS® medical imaging software this digital data can be viewed, processed and archived

Rapidly to images of superior quality

Because of a fast scanning process X-ray images are provided quickly for reliable diagnosis. Misdosage and as a result overexposure or underexposure are almost impossible with this CR-technology due to the high exposure tolerance.

Digital imaging everywhere

You decide, where to place your compact Vistascan. The operation can take place under normal lighting conditions; this means that you won't need a darkroom anymore. Due to the low noise level it can be used even in the patient's area.



Rapidly to images of superior quality

Because of a fast scanning process X-ray images are provided quickly for reliable diagnosis. Misdosage and as a result overexposure or underexposure are almost impossible with this CR-technology due to the high exposure tolerance.

Small investment

Surely, the investment is worthwhile, because in the future you can work without chemicals, cleaning and disposal. The imaging plates can be used (appropriate handling provided) theoretically unlimited. In addition you can keep on using your existing X-ray unit.

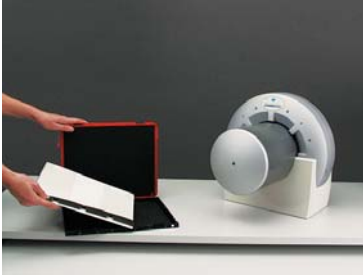


Technical Description

The revolutionary PCS-technology (Photon-Collecting-System) ensures extraordinary low image noise by scanning the imaging plate with almost 100 per cent efficiency of active radiation. Due to the very high resolution of more than 10 line pairs per millimeter exact diagnosis is ensured. Outstanding feature hereby is the grey scale resolution of 16-Bit.

The digital X-ray images are available for diagnosis on the monitor – in fact in a quality comparable to conventional films. By using the PROMIS® medical imaging software the images can be processed, archived and sent off

Before taking the next X-ray, the "old" image data has to be deleted from the imaging plate and must be put back into the cassette again. Because of the fast scanning process the imaging plate and Vistascan are ready for taking further X-rays quickly



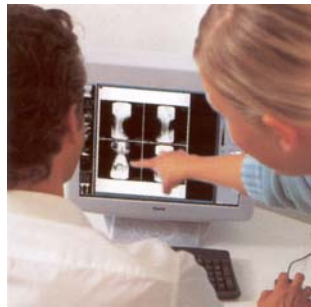
1. Application step:
Taking the imaging plate out of the cassette



2. Application step:
Positioning of the imaging plate at Vistascan – the scanning process starts automatically.

Technical Data:

Resolution:	varies depending on size and type of imaging plate
Smallest physically readable pixel size:	12,5 µm (respectively 40 Lp/mm)
Scanning process:	format 30 x 40 cm at 5 Lp/mm in 62 seconds
Max. infeed width:	30 cm (12")
Dimensions (H/W/D):	39 cm x 38 cm x 46 cm (151/3" x 15" x 18")
Weight:	25 kg (55 lb)
Installation:	table top
Noise:	about 49 dB(A)
Temperature range:	+10 up to +30 °C (+50 up to +86 °F)
Connection to network:	100-240 V / 50-60 Hz
Electrical connected load:	70 W
Laser protection class:	I (EN60825-1)
Further detail:	integrated printer port



The exposed imaging plate is taken out of the cassette and placed at Vistascan – similar to the way you know from the conventional X-ray film. Vistascan identifies the imaging plate, starts and controls the process of scanning automatically. It provides an immediate image preview for control purposes

Excellent results:

- Minimized Image-interference
- Optimised image quality

Standard delivery includes:

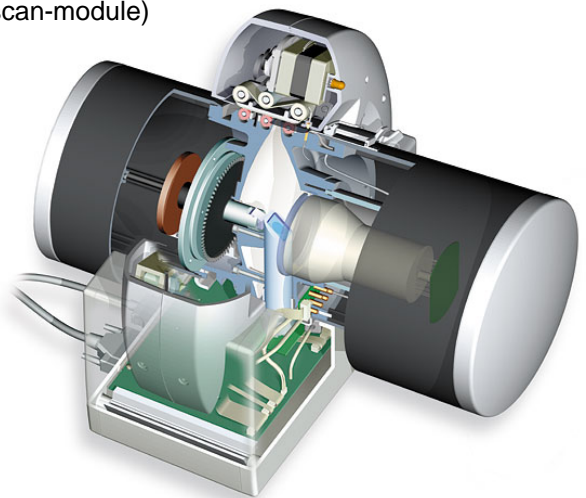
- Each one imaging plate including protection sleeve: 18 x 24 cm, 24 x 30 cm and 30 x 40 cm (8" x 10", 10" x 12", 12" x 16")
- Software: PROMIS® medical imaging software (Basic-/Vistascan-module)
- Eraser for imaging plates
- Connecting cable (3m) for LPT and power supply

Additional requirements (accessories):

- PC
- Diagnostic monitor
- Imaging storage
- Film cassettes without intensifying screens

Minimal PC system requirements

- Pentium-PC 1,4 GHz clock rate
- 512 MB main memory (RAM)
- 20 GB free hard disk memory
- Operating system Windows 2000™ or Windows XP™
- LPT PC-connection in EPP-mode
- optional: TCP/IP-connection to network



IGP UK LIMITED

The Offices above Unit 5
The Maltings, Maltings Road
Battlesbridge Essex
SS11 7RH

TEL: 01245 323555
FAX: 01245 323762

Why not visit our website and view our large range of products.

WEBSITE: igp-ukltd.co.uk

To contact our sales department you can email us direct.

E-Mail: sales@igp-ukltd.co.uk



Certificate No. 6139